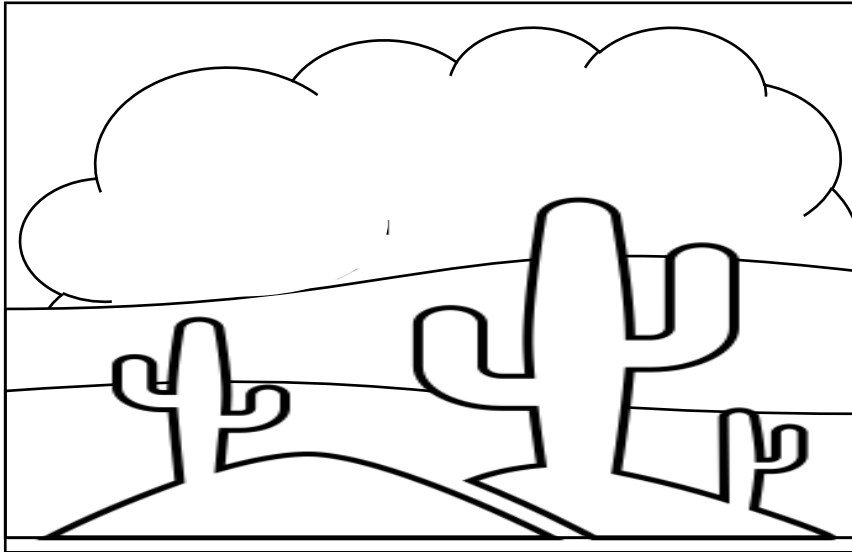
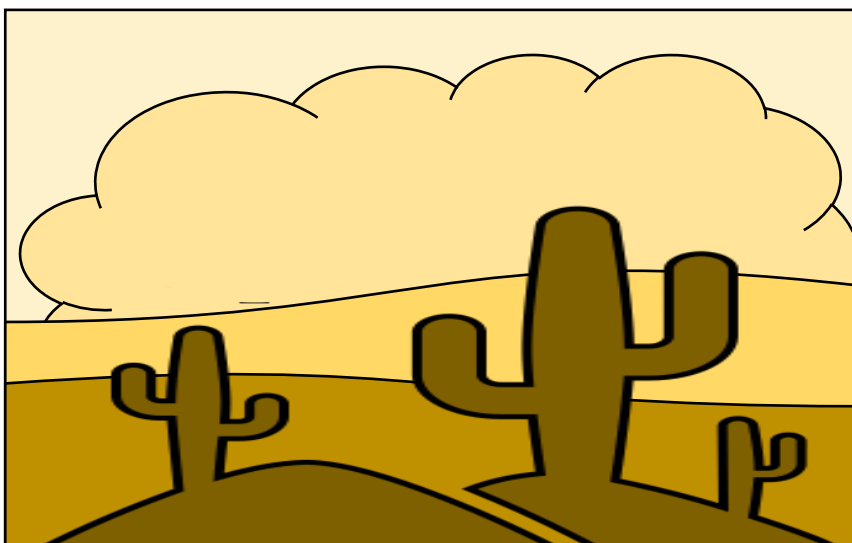


# Color value landscape

1. Start with a sheet of 8 1/2" X 11" white paper.
2. Using a pencil drawing a landscape. Your landscape should have different levels. The lowest level is closest to the front of the picture. As Each level gets higher it represents an area that is farther away from the vewer. your landscape should have at least four separate Layers.



3. Choose one color. Using only that color and black you will color your landscape. The lowest layer of your landscape will be the darkest shade your color. The Next level of your landscape will be the second darkest version of your chosen color. Each level higher on the page will be a lighter version of your chosen color. The highest layer of your landscape will be the lightest version of your chosen color. Your landscape now forms a value scale for your chosen color from lightest on top to darkest on bottom.



# Finished Examples

